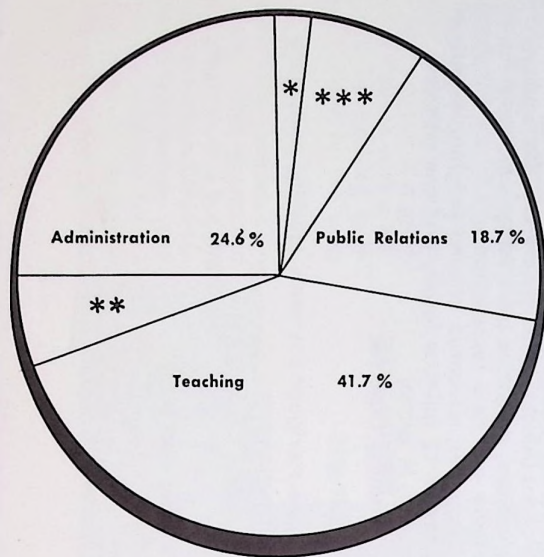


Note: This Work has been made available by the authority of the copyright owner solely for the purpose of private study and research and may not be copied or reproduced except as permitted by the copyright laws of Canada without the written authority from the copyright owner.

News (London College of Bible and Missions). (September 1964)

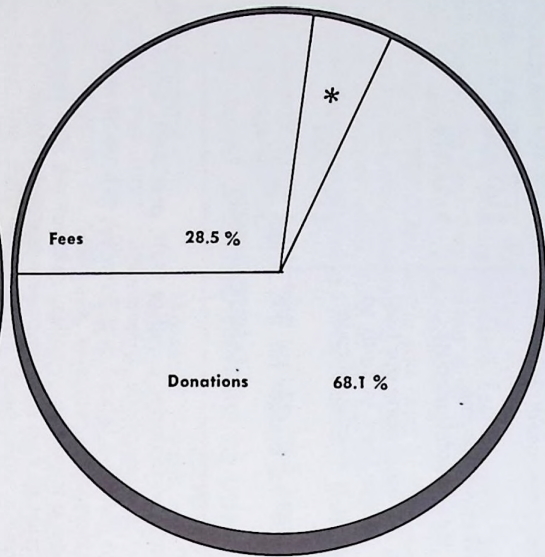
THE COST OF TRAINED LEADERSHIP

Authorized as Second Class Mail
by the Post Office Department,
Ottawa, and for payment of Post-
age in Cash. Postage Paid at
London, Ontario.



DISBURSEMENTS

*Library	2.3 %
***Maintenance	7.2 %
**Capital Expenditures	5.5 %



INCOME

*Miscellaneous	3.4 %
----------------	-------

LCBM
News

SEPTEMBER, 1964

PUBLISHED BY
LONDON COLLEGE OF BIBLES
AND MISSIONS,
518 QUEENS AVE.,
LONDON, ONTARIO

FILE COPY

THE COST OF TRAINING FOR THE SCHOOL YEAR 1964-65

How do we determine the cost of operating the school for a year?

1. Decide on our educational goals.	—Improve the caliber of our accredited Bible College program. —Continue development of a recognized Christian General Arts College.
2. Determine the cost for this year.	\$189,350
3. Eliminate any items that are not essential.	\$ 27,500
	\$161,850
4. Estimate known income (student fees, miscellaneous)	\$ 51,650
	\$110,200
5. Believing we have done our best we look to the Lord in faith to supply what is needed through his people.	\$110,200

The following is the budget for this school year:

DISBURSEMENTS

OPERATING EXPENSES

Administration (Salaries of office staff, president, office supplies, telephone, insurance)	\$ 39,950
Extension (Evening School and Saturday School of Music)	\$ 400
Library (Magazines, salaries, supplies)	\$ 3,750
Maintenance (cleaning supplies, renovations and repairs, salaries of two maintenance men and student cleaning staff, heat, light, water)	\$ 11,600
Public Relations (Alumni office, choir and LCBM Sundays, publications, magazine advertising, salaries of PR secretary and field representative)	\$ 30,200
Teaching (supplies, advanced training program, expenses, salaries of 12 full-time faculty and one part-time instructor in piano)	\$ 66,550
Total Operating Expenses	\$153,050

CAPITAL EXPENDITURES

(Library books, mortgage payments, teaching equipment)	\$ 8,800
Total Disbursements	\$161,850

INCOME

Student Tuition and fees	\$ 46,200
Miscellaneous	\$ 5,450
Donations	\$110,200
Total Income	\$161,850

How can you help us to meet the cost of this training?

1. **Pray**—We were able to finish last year in the black as gifts came in for the Challenge Drive in response to prayer.
2. **Give**—
 - (a) Partner Plan—You may underwrite the cost of training a student for a year. That is, you would pay the difference (\$723) between what the student pays (\$288) and what the training actually costs.
 - (b) Stewardship Fellowship Plan—Under this plan you may give regularly, toward the general funds of the college, an amount determined by yourself, as you are led of the Lord. Your commitment in this matter is a “faith promise” between you and the Lord. No one is billed for the stipulated amounts, but monthly envelopes are provided for the convenience of those who desire to make regular investments in this way.
 - (c) Special Gifts—We always welcome special gifts, large or small, from those who feel they cannot give regularly. These may be given for special needs, or as contributions to the operating funds.

In the May edition of the LCBM News, you read of the Lord’s leading in the lives of this year’s graduates: twelve to the pastorate, six to the foreign mission field, three to secular work, two to be pastors’ wives, and one to teaching. Twelve of these are planning further studies in preparation for their service.

Our present students **MUST** be trained to take their places in the Lord’s program of World Evangelization.

LORD, WHAT WILT THOU HAVE ME TO DO?

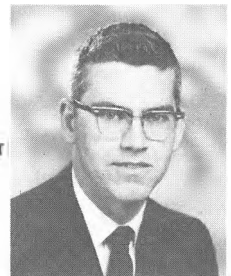
Faculty Appointments

Donald A. Leggett has been appointed to the faculty of London College as Assistant Professor of Old Testament and Hebrew. He possesses a B.A. degree from Dickenson College, a B.D. degree from the Reformed Episcopal Seminary, a Th.M. degree from Westminster Theological Seminary, and is completing his Th.D. degree at the Free University of Amsterdam. Mr. Leggett is married, and has two children. Mrs. Leggett is a graduate of Dickenson College with a B.S. degree. She will be teaching part-time at London College in the area of Biology.

Mrs. Helen J. Adams has been appointed as part-time instructor in English Literature. She graduated from Wheaton College with a B.A. in English Literature, and from Columbia University with an M.A. degree. She taught at Barrington College for 11 years prior to coming to London in 1962. Mrs. Adams is the wife of

Warren E. Adams, the Director of the Music department at London College.

These appointments fill the major faculty needs for the coming year. We thank God for sending us these well-qualified and dedicated workers to assist in the ministry of preparing young people for the Lord’s service.



DONALD A. LEGGETT

PRAISE ITEM

Dr. Quinn reports, “Mrs. Macaulay has shown gradual improvement for several weeks. The symptoms seem to be under control and her general health and strength are gaining.”

Chapel Echoes V

By DR. J. C. MACAULAY, President

Whoever conjured up an effeminate Christ could not have read the Gospels with much care. The growing, irresistible impression drawn from a study of His life is that of great moral strength, coupled with complete poise and perfect balance. This is in marked contrast to most of our lives, and, since He is the pattern for His people, we shall be driven to enquire the secret of this strength and poise and balance, in the hope of attaining some degree of likeness to our blessed Lord—remembering always that such likeness will be the work of the Holy Spirit, not the product of our own striving.

Back of this moral strength was a vivid, unshakeable consciousness of His unique relation to God. This appears even in His boyhood (Luke 2:49), expresses itself in many ways throughout the ministry, and seems to rise to a great crescendo at the end, when indeed its support was most needed. Although the deepening shadow of the cross sorely troubled Him, every step toward it was marked by composure and control. Surely John 13:3 is a large part of the answer.

Have not we been brought by grace into the glorious relation of sonship? If the realization of this really possessed our souls, we would be saved from much frustration and uncertainty. When John tells us of the love of God that has made us sons of God (1 John 3:1), he adds a little phrase which does not show in the KJV — “and such we are.” Let us get hold of that. Let that get hold of us. It will give poise in a staggering world.

Another reason for the control and balance of our Lord's life was a steadfast purpose. This He expressed to



His disciples by the well of Sychar: “My meat is to do the will of him that sent me” (John 4:34). Now a settled purpose even on a worldly level (such as making money) gives a measure of drive to life, but not necessarily poise, and rarely balance. But when purpose is linked with the will of God, it gives strength without strain, stability without stress. To know what one is driving for, and to know that God Himself is working with us for the attainment of that goal, certainly builds a rock-like quality into one's life. It makes for integration, saving us from the torment of fragmentation.

The amazing strength and composure of the Lord Jesus arose also from complete trust. He was sure of His Father. When His ministry was what men would have called a failure, when the intelligentsia spurned Him and a following of very common people rallied to His cause, His answer was not a panicky questioning of the situation, but a quiet, “Even so, Father” (Matt. 11:26). He sought to instill this same trust in His disciples, but they were about as difficult to teach as we are. Nevertheless, if we would obey His injunction, “Have faith in God”, we should have the same quiet composure as He had in the midst of the storm. He has said, “Learn of me . . . and ye shall find rest.” A conscious relationship with God, a steadfast purpose from God, and a complete trust in God: this is the way of strength, of poise, of balance.